



### Main Particulars

Class:	DNV +1A1 Tanker for liquefied gas (LNG), E0, Ice C, (SWE E)
Flag	Swedish
Homeport	Stockholm
LOA	49,65 m
Breadth	11,25 m
Draught	3,11 m
DWAT	129 ton
DWCC	70 ton (abt) LNG
Speed	13 knots
Crew	3 (4)
Built	1974 (Löland verft, Norway)
Retrofitted	2012 (LNG Carrier)
GO	26 m <sup>3</sup>
FW	68 m <sup>3</sup>

### Main and Auxeng

ME	MAN Alfa B&W 6L23/30A
PI	735 kW
Aux	2xVP TAMD7SB
ME cons.	0,140 m <sup>3</sup> /h

### Cargo handling

LNG tank	Cryo AB
Pdes	16 bar
Gross vol	187 m <sup>3</sup>
Net vol	160 m <sup>3</sup>
LNG	1,85 ton/min (abt 4,3 m <sup>3</sup> /min)
Boiler (DF)	Gesab 600 kW (LNG/GO)
Cranes	2 st (Hose handling+supply)
Cargohose	6 inch Gutterling
LNG Coupling	6 inch DryDisconnectCoupling by MannTeknik AB

### Navigation

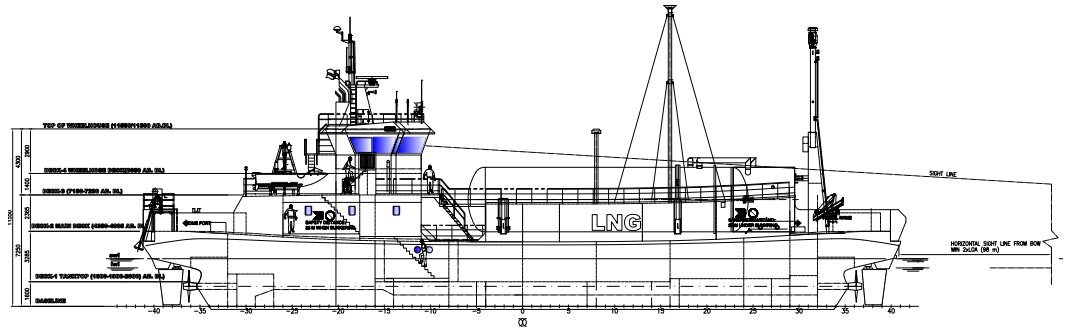
Radar	1xFuruno X-band FAR-2107(-BB)
E-chart Syst	Transas Navi-Sailor 4000
GMDSS	Sailor 6222
GPS	Furuno GP-150
Autopilot	Robertson AP9 MK3

### Description

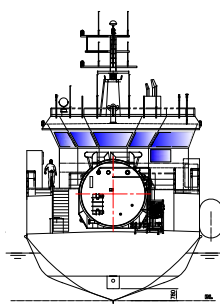
SEAGAS was retrofitted from carferry to LNG fueling vessel (LNGF) in 2012 at Fiskerstrand verft, Norway. SEAGAS can supply LNG-fuelled vessels with up to 160 m<sup>3</sup> LNG in about 45 minutes.

### Contacts

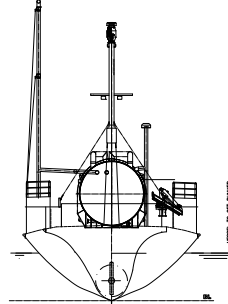
[aga.se/Produkter/Flytande naturgas \(LNG\)](http://aga.se/Produkter/Flytande_naturgas_(LNG))



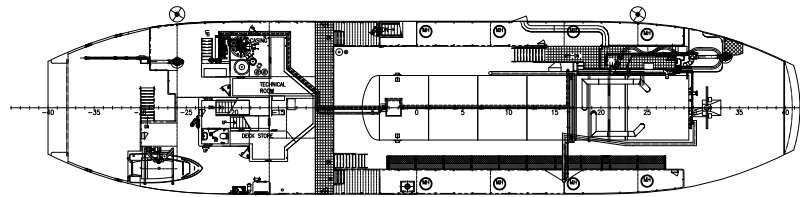
PROFILE



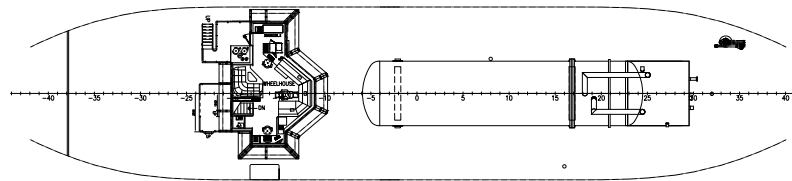
SECTION



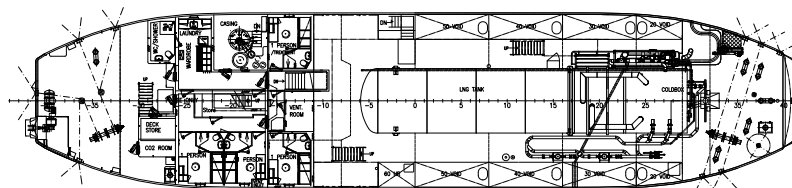
SECTION BOWSHIP



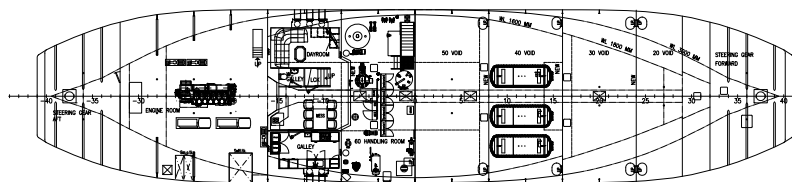
DECK 3



WHL DECK



DECK 2



BELOW DECK 2